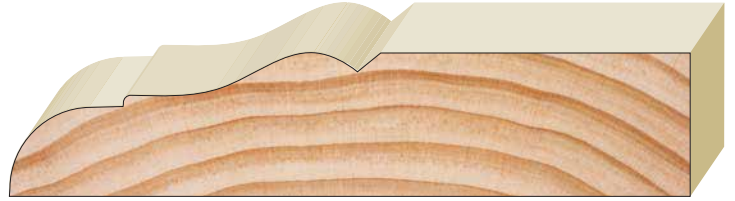


# RAMARAMA

Code: SA203



## SELECT SKIRTING & ARCHITRAVES



Architrave	Finished Size: 90mm x 19mm
Skirting	Finished Size: 140mm x 19mm



# KARAKA

Code: SA400

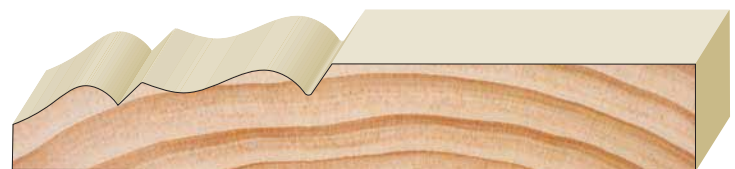


Architrave	Finished Size: 90mm x 19mm
Skirting	Finished Size: 140mm x 19mm



# GLENBROOK

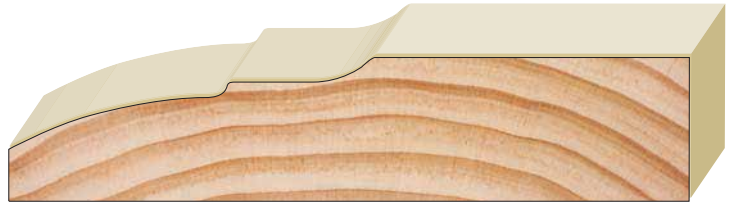
Code: SA7



Architrave	Finished Size: 90mm x 14mm
Skirting	Finished Size: 140mm x 14mm

# WHITFORD

Code: SA99



Architrave	Finished Size: 90mm x 19mm
Skirting	Finished Size: 140mm x 19mm

# BROOKBY

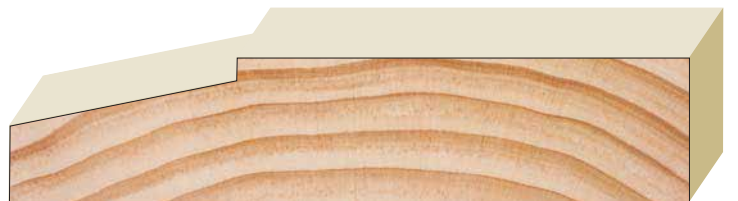
Code: SA105



Architrave	Finished Size: 90mm x 19mm
Skirting	Finished Size: 140mm x 19mm

# ARDMORE

Code: SA100



Architrave	Finished Size: 90mm x 19mm
Skirting	Finished Size: 140mm x 19mm

Supplied in 100% NZ Pine fingerjoint, unprimed  
Standard lengths 5.4m  
Pine clears and other timbers available on request

Machined by NZ Timber Profiles  
A Division of Papakura Joinery Ltd

[www.nztimberprofiles.co.nz](http://www.nztimberprofiles.co.nz)